



THE G. C. BROACH COMPANY - 7667 EAST 46 PLACE - TULSA, OK 74145-6364
TELEPHONE: 918-664-7420 TELEFAX: 918-627-4083

IN STOCK

READY FOR IMMEDIATE DELIVERY

FOUR IAP, INC. B-660-92 EXTRA HEAVY DUTY FANS

DESCRIBED AS FOLLOWS:

-
- Quantity:** Four - 2 CCW + 2 CW
 - Item:** Forced Draft Fan
 - Duty:** 75.178 #/Sec (118,827 ACFM) @ 9" SP @ 485°F @ 2500 Ft.
 - Selection:** IAP, Inc. Model B-660-92, Extra Heavy Duty, Premium Efficiency Arr't 8. 257 BHP @ Conditions described in "Duty" above.
 - Accessories:** Door, Flanged Inlet & Outlet, Drain, Shaft Seal, Heat Slinger, Drive Guards, Split Housing, Falk Type 120T Coupling, Inlet Vane Damper w/Pneumatic Actuator/Positioner/End Switches, Mfg. Std. High Temp. Aluminum Paint, and Mounted Motor.
 - Motor:** Horsepower: 300 Severe Duty, Premium Efficiency
RPM: 1200
Voltage: 460-3-60 Frame: 5000 S.F. 1.15
Motor and Drive Mounted by: IAP, Inc.
Enclosure: TEFC
 - Bearings:** Heavy Duty
 - Shipping Wt:** 11,500 Lbs.
 - Note:** Closed Damper Cold Start Required.

These Forced Draft Fans are based on the following design conditions:

Max. Design Temperature of Fan, Deg. F ----- 600 - 800
 Max. I.V.D. Design Temperature, Deg. F ----- 600
 Fan Blower: Size ---- 660-92% Type ---- B
 Class --- EHD Arrangement --- 8
 Dis. Position - DB SWSI

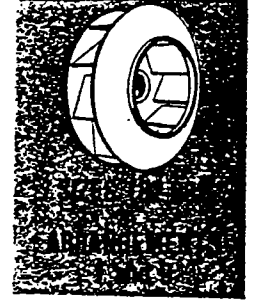
Tested Fan Performance:

ACFM ----- 124,080
 S.P. (In. W.G.) ----- 10"
 Performance, RPM ----- 1167
 BHP ----- 267
 Density (Lb/Sq.Ft.) ----- .038
 Temperature, Deg. F ----- 485

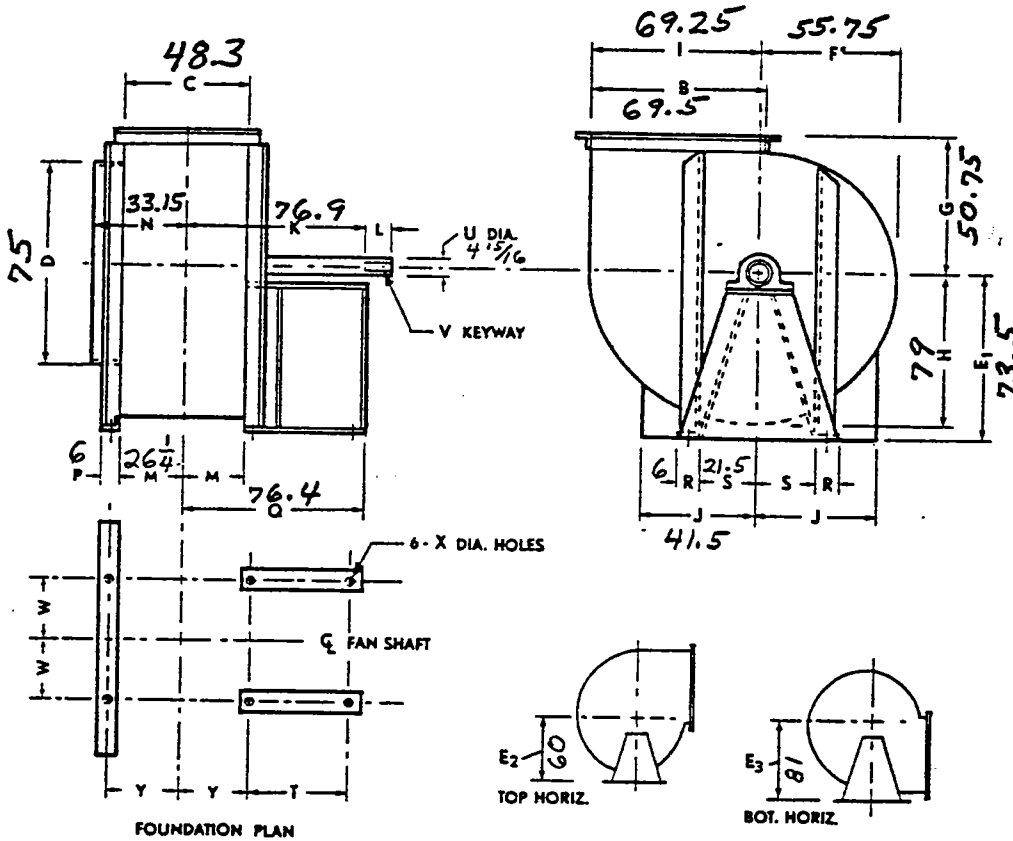
BI-660-9278 width

**EXTRA HEAVY DUTY
INDUSTRIAL FANS**

**DIMENSIONS
TYPE B
NON-OVERLOAD
WHEEL**



**STATIC PRESSURE
13" thru 24"**



Type AB-X

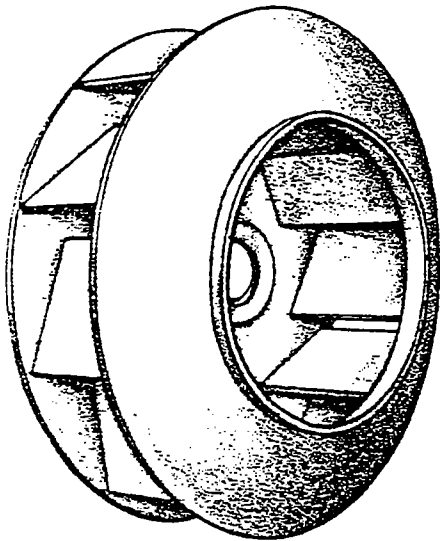
DIMENSIONS

FAN SIZE	B	C	D	E ₁	E ₂	E ₃	F	G	H	I	J	K	L	M	N	P	Q	R	S	T	U	V	W	X	Y
182	19 1/2	14 1/2	24	20 1/2	17 1/2	21 1/2	15 1/2	15 1/2	18 1/2	19 1/2	14	24	3	7 1/2	11 1/2	3	23 1/2	3	8	13 1/2	1 1/2	3 1/2	9 1/2	1 1/2	8 1/2
200	21 1/2	16	27	21 1/2	19	23	16 1/2	16 1/2	19 1/2	21	15 1/2	26 1/2	4	8	12 1/2	3	26	3	9	15 1/2	1 1/2	1 1/2	10 1/2	1 1/2	9 1/2
222	23 1/2	17 1/2	29	24	21	25 1/2	18 1/2	18 1/2	21 1/2	23 1/2	16 1/2	27 1/2	4	8 1/2	13 1/2	3	26 1/2	3	9	15 1/2	1 1/2	1 1/2	10 1/2	1 1/2	10 1/2
245	26	19 1/2	32	26 1/2	23	27 1/2	21	20	24 1/2	25 1/2	18	28	4	9 1/2	14 1/2	3	27 1/2	3	9	15 1/2	2 1/2	1 1/2	10 1/2	1 1/2	11
270	28 1/2	21 1/2	34	29	25 1/2	30 1/2	23 1/2	22	27	28 1/2	19	29	4	10 1/2	15 1/2	3	28 1/2	3	10	15 1/2	2 1/2	1 1/2	11 1/2	1 1/2	12
300	31 1/2	23 1/2	37	31 1/2	27 1/2	33 1/2	25 1/2	25	29 1/2	31 1/2	21 1/2	30 1/2	4	11 1/2	16 1/2	3	30 1/2	3 1/2	10	15 1/2	2 1/2	1 1/2	11 1/2	1 1/2	13 1/2
330	34 1/2	26 1/2	40 1/2	34 1/2	30	36 1/2	28	26 1/2	32 1/2	34 1/2	23 1/2	35 1/2	5	13 1/2	17 1/2	3	35 1/2	3 1/2	10	18	2 1/2	1 1/2	11 1/2	1 1/2	14 1/2
365	38 1/2	29	43 1/2	38	33	40 1/2	31	29 1/2	36	38 1/2	24 1/2	39	5	14 1/2	19	3	38 1/2	3 1/2	12	20	3 1/2	1 1/2	13 1/2	1 1/2	16 1/2
402	42 1/2	31 1/2	48	42 1/2	37	45 1/2	34	31 1/2	39 1/2	42 1/2	27	45 1/2	5	15 1/2	21 1/2	4	45 1/2	4	12	25	3 1/2	1 1/2	14 1/2	1 1/2	18 1/2
445	47	35 1/2	52 1/2	47	41 1/2	50	38 1/2	35	43 1/2	46 1/2	29 1/2	48 1/2	6	17 1/2	25 1/2	4	48 1/2	6	13	25	3 1/2	1 1/2	17 1/2	1 1/2	20 1/2
490	51 1/2	38 1/2	57	51 1/2	44 1/2	54 1/2	41 1/2	38 1/2	48 1/2	51 1/2	31 1/2	50 1/2	6	19 1/2	27 1/2	4	50	6	13	26 1/2	3 1/2	1 1/2	17 1/2	1 1/2	22
542	57 1/2	43	62 1/2	56 1/2	49 1/2	60 1/2	46 1/2	43	53 1/2	57	34 1/2	56 1/2	7	21 1/2	29 1/2	4	56	6	15 1/2	30	4 1/2	1 1/2	20	1 1/2	24
600	63 1/2	47 1/2	68 1/2	62 1/2	55 1/2	67 1/2	51 1/2	49	59 1/2	63 1/2	38 1/2	71 1/2	7	23 1/2	31 1/2	6	71 1/2	6	19 1/2	42	4 1/2	1 1/2	23	1	26 1/2
660	69 1/2	52 1/2	75	69	60	73 1/2	55 1/2	50 1/2	64 1/2	69 1/2	41 1/2	79	7	26 1/2	35 1/2	6	78 1/2	6	21 1/2	48 1/2	4 1/2	1 1/2	25	1	29 1/2
730	76 1/2	57 1/2	83	76	66	81	61 1/2	55 1/2	71 1/2	76 1/2	46	87 1/2	8	28 1/2	37 1/2	6	87	6	24	52	4 1/2	1 1/2	27 1/2	1	32 1/2
807	85	64	90 1/2	85 1/2	74 1/2	91	68 1/2	61 1/2	79 1/2	84 1/2	51 1/2	96 1/2	8	32	42	6	96	6	27	58 1/2	5 1/2	1 1/2	30 1/2	1 1/2	38 1/2
890	94	70 1/2	100 1/2	94	81 1/2	100	75 1/2	67 1/2	87 1/2	93 1/2	56 1/2	106 1/2	9	35 1/2	47 1/2	8	106	8	30	62	5 1/2	1 1/2	35	1 1/2	39 1/2
982	103 1/2	77 1/2	111	103	89 1/2	109 1/2	83 1/2	74 1/2	96 1/2	103 1/2	61 1/2	118	9	38 1/2	50 1/2	8	117	8	34	70	6 1/2	1 1/2	39	1 1/2	43

x .92 = 48.3

**NOTE: All Dimensions are Submittal Data ONLY -
Do Not use for Construction unless Certified**

**QUICK FACTS
INDEX**



Fan Laws Pg. 4
 Motor Positions Pg. 5
 Air Density Ratios Pg. 5
 Temperature/Altitude
 Correctional Factors Pg. 5
 Dimensions Pg. 6.7
 Performance Data Pgs. 8-25
 Curve Pg. 26
 Use of Catalog and Curves ..Pg. 27
 Predominant Arrangements . Pg. 28



TYPE B WHEEL BACKWARD INCLINED

Performs at maximum efficiencies with relatively low tip speeds. Quiet operation, non-overloading characteristics, resulting in the smallest wheel diameter for given CFM. Good for corrosive environments. Easily made of special alloys.

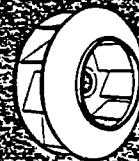
**MAXIMUM RPM
steel wheels and shafts**

Wheel Diameter	Wheel Size	Page No.	VOLUME		Max Safe RPM @ 70° F		Max Safe RPM @ 600° F		Max Safe RPM @ 800° F	
			Min. CFM	Max. CFM	Heavy Duty 12" SP	Extra 24" SP	Heavy Duty 12" SP	Extra 24" SP	Heavy Duty 12" SP	Extra 24" SP
18.250"	182	8	3040	12920	3872	4521	3201	3851	2904	3398
20.000"	200	9	3680	15640	3533	4125	3003	3506	2650	3094
22.250"	222	10	4528	19244	3176	3708	2710	3152	2382	2781
24.500"	245	11	5520	23460	2884	3368	2451	2863	2183	2526
27.000"	270	12	6720	30240	2617	3056	2224	2598	1953	2292
30.000"	300	13	8240	37080	2355	2750	2202	2338	1767	2063
33.000"	330	14	10032	45144	2141	2500	1820	2125	1606	1875
36.500"	365	15	13005	52020	1935	2260	1640	1921	1452	1695
40.250"	402	16	14880	63240	1756	2050	1482	1742	1317	1537
44.500"	445	17	18192	77316	1588	1854	1350	1576	1191	1391
49.000"	490	18	22064	93772	1442	1684	1226	1431	1061	1263
54.250"	542	19	27040	114290	1303	1521	1107	1293	977	1141
60.000"	600	20	35139	140556	1178	1375	1001	1169	883	1031
66.000"	660	21	42517	170068	1071	1250	910	1063	803	938
73.000"	730	22	52020	208080	968	1130	823	961	726	848
80.750"	807	23	63648	254592	875	1022	744	869	650	766
89.000"	890	24	77316	309264	794	927	675	788	596	695
98.250"	982	25	94231	376924	729	840	617	714	539	630

NOTE: Custom Designed Features/
 Accessories Available. Refer to the
 General Catalog #G-10.

**TYPE B
NON-OVERLOAD
WHEEL**

SIZE 660
58.00" DIA.



Outlet Area = 25.010 Sq. Ft.
Tip Speed = 17,279 X RPM
Single Width, Single Inlet

Class II construction
available only in the dark
yellow areas in the rating
tables.

Heavy Duty construction from
2" thru 12" W.G.S.P.

Extra Heavy Duty construction
from 13" thru 24" W.G.S.P.

VOLUME CFM	OV FPM	VP IN.	STATIC PRESSURE (INCHES)							
			2.000	2.500	3.000	3.500	4.000	4.500	5.000	
			RPM BHP	RPM BHP	RPM BHP	RPM BHP	RPM BHP	RPM BHP	RPM BHP	RPM BHP
40016	1600	0.16	362 16.8	397 20.4	415 24.2	446 30.0				
42517	1700	0.18	370 18.2	398 22.0	423 25.9	454 31.9	475 36.2			
45018	1800	0.20	378 19.6	406 23.6	431 27.7	462 34.0	483 38.5	503 43.0		
47519	1900	0.23	386 21.2	413 25.4	439 29.6	470 36.2	491 40.8	511 45.5	530 50.3	
50020	2000	0.25	394 22.8	421 27.2	447 31.6	478 38.4	499 43.2	519 48.1	538 53.1	
52521	2100	0.27	403 24.6	429 29.1	454 33.7	485 40.8	507 45.8	527 50.8	546 55.9	
55022	2200	0.30	412 26.5	438 31.2	462 35.9	494 43.2	515 48.1	535 52.7	554 57.6	
60024	2400	0.36	431 30.7	455 35.6	479 40.7	501 45.9	523 51.2	543 56.6	562 62.1	
65026	2600	0.42	452 35.5	474 40.6	496 46.0	518 51.5	539 57.2	559 62.9	578 68.7	
70028	2800	0.49	474 40.8	494 46.3	515 51.9	535 57.7	555 63.6	575 69.7	594 75.8	
75030	3000	0.56	497 46.9	516 52.6	534 58.5	554 64.5	573 70.8	591 77.1	610 83.6	
80032	3200	0.64	521 53.7	538 59.6	555 65.7	573 72.1	591 78.5	609 85.2	627 91.9	
85034	3400	0.72	545 61.2	561 67.4	577 73.8	594 80.3	611 87.1	627 94.0	644 101	
90036	3600	0.81	570 69.6	585 76.0	600 82.6	616 89.5	631 96.4	647 104	663 111	
95038	3800	0.90	596 78.9	610 85.5	624 92.4	638 99.4	653 107	668 114	683 122	
100040	4000	1.00	622 89.0	635 95.9	648 103	661 110	675 118	689 125	703 133	
110044	4400	1.21	674 112	686 120	697 127	709 135	722 143	734 151	747 159	
120048	4800	1.44	728 140	738 148	749 156	759 164	770 173	781 181	793 190	
130052	5200	1.69	782 172	791 180	801 189	811 198	820 207	830 216	841 225	
140056	5600	1.96	837 209	845 218	854 227	863 236	872 246	881 255	890 265	
150060	6000	2.24	892 251	900 261	908 270	916 280	924 290	933 300	941 311	

VOLUME CFM	OV FPM	VP IN.	STATIC PRESSURE (INCHES)							
			6.000	7.000	8.000	9.000	10.00	11.00	12.00	
			RPM BHP	RPM BHP	RPM BHP	RPM BHP	RPM BHP	RPM BHP	RPM BHP	RPM BHP
55022	2200	0.30	581 66.4							
60024	2400	0.36	598 73.2	630 84.6						
65026	2600	0.42	614 80.5	646 92.5	676 105					
70028	2800	0.49	629 88.3	662 101	693 114	721 127	747 141			
75030	3000	0.56	645 96.7	678 110	708 124	737 138	764 152	789 166		
80032	3200	0.64	661 106	693 120	724 134	753 149	780 164	805 178	829 194	
85034	3400	0.72	677 115	709 130	740 145	768 160	796 176	821 192	846 207	
90036	3600	0.81	695 126	726 141	755 157	784 173	811 189	837 205	862 222	
95038	3800	0.90	713 137	742 153	772 169	800 186	827 203	853 220	877 237	
100040	4000	1.00	732 149	760 166	788 183	816 200	843 217	868 235	893 253	
105042	4200	1.10	751 162	779 179	806 197	833 215	859 233	884 251	909 270	
110044	4400	1.21	772 177	798 194	824 212	850 231	875 249	900 268	924 288	
115046	4600	1.32	793 192	818 210	843 228	868 247	893 267	917 286	941 306	
120048	4800	1.44	816 208	839 227	863 246	887 265	910 285	934 305	957 326	
125050	5000	1.56	838 225	860 244	883 264	906 284	929 304	952 325	974 346	
130052	5200	1.69	861 244	883 264	904 284	926 304	948 325	970 346	992 368	
140056	5600	1.96	909 285	928 306	948 327	968 348	988 370	1009 392	1029 415	
150060	6000	2.24	958 332	976 353	994 375	1012 398	1031 421	1050 444	1069 468	
160064	6400	2.55	1009 384	1025 407	1042 429	1059 453	1076 477			
170068	6800	2.88	1060 443	1075 466						

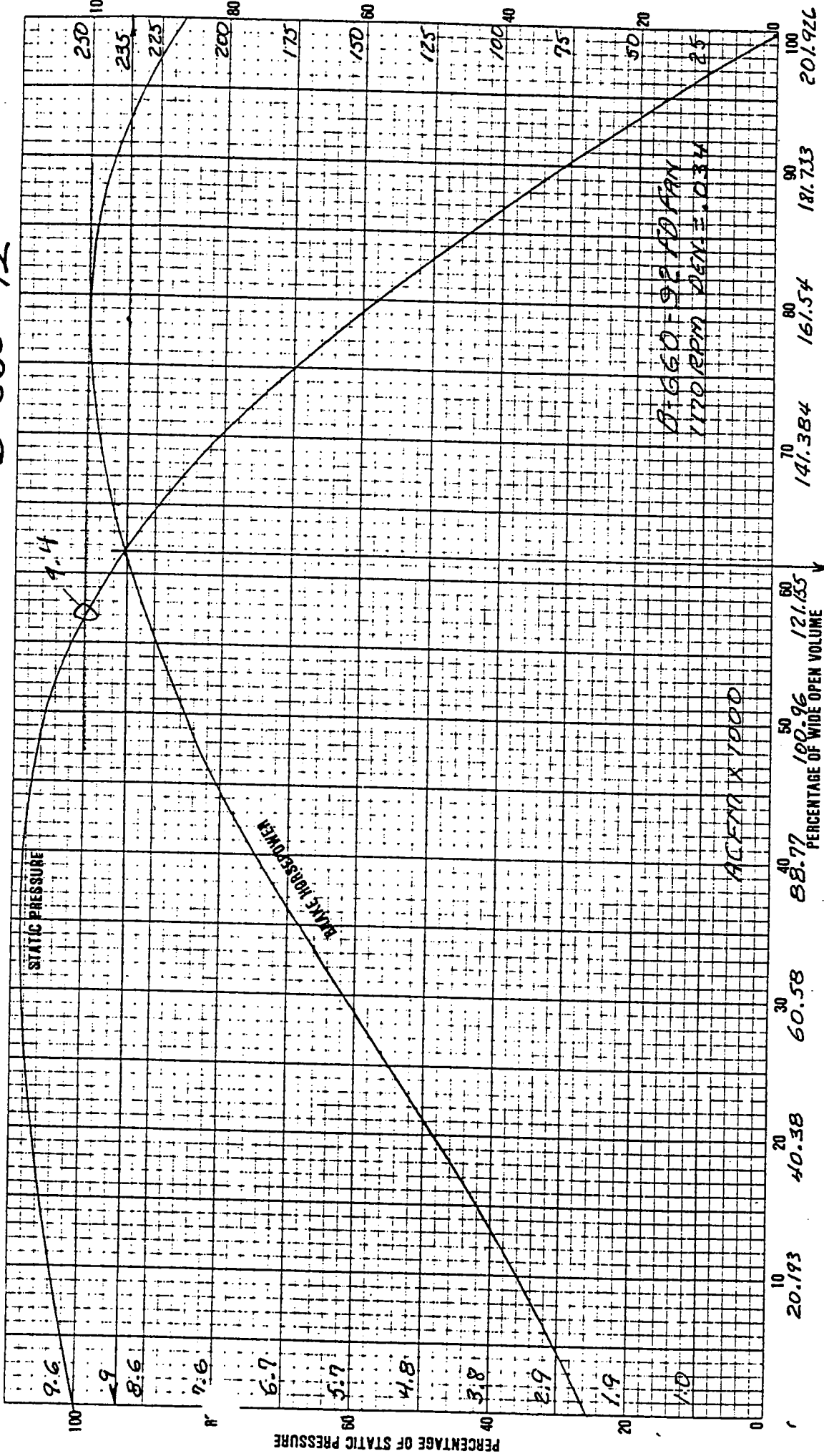
VOLUME CFM	OV FPM	VP IN.	STATIC PRESSURE (INCHES)							
			14.00	16.00	18.00	20.00	22.00	24.00		
			RPM BHP	RPM BHP	RPM BHP	RPM BHP	RPM BHP	RPM BHP	RPM BHP	RPM BHP
80032	3200	0.64	852 209							
85034	3400	0.72	869 223	891 240						
90036	3600	0.81	885 239	908 255	950 290					
95038	3800	0.90	901 254	924 272	966 308	1006 344				
100040	4000	1.00	917 271	940 289	983 326	1022 364	1060 402			
105042	4200	1.10	932 289	955 308	999 346	1039 385	1076 424	1112 465		
110044	4400	1.21	948 307	971 327	1014 366	1055 407	1093 448	1129 489	1162 531	
115046	4600	1.32	964 326	986 346	1030 388	1070 429	1109 472	1145 514	1179 558	
120048	4800	1.44	980 346	1002 367	1045 410	1086 453	1125 496	1161 541	1195 585	
125050	5000	1.56	997 368	1019 389	1061 433	1102 477	1140 522	1177 568	1212 614	
130052	5200	1.69	1014 390	1035 412	1077 457	1117 503	1156 549	1192 596	1227 644	
140056	5600	1.96	1050 438	1070 462	1110 509	1149 558	1187 607	1224 656	1259 706	
150060	6000	2.24	1088 492	1107 516	1145 566	1183 617	1219 668	1255 721		
160064	6400	2.55	1128 551	1146 576	1182 628	1218 681	1253 735			
170068	6800	2.88	1171 616	1188 643	1221 697	1255 752				
180072	7200	3.23	1216 688	1231 716						

NOTES:

- The above ratings are for fans with outlet duct, and open inlet.
- No provision is made in the tables for external loss due to obstructions in the airstream such as inlet boxes, nested variable inlet vanes, external variable inlet vanes, inlet box dampers, discharge dampers, inlet screens. These losses, if any MUST be added to the system loss before fan selection.
- BHP does NOT include drive loss.



B-660-92



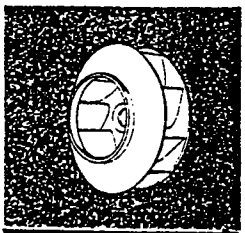
VOLUME FACTORS
@ 100% X RPM

SIZE	182	3.54
200	4.70	
222	6.42	
245	8.54	
270	11.43	
300	15.68	
330	20.87	
365	29.50	
402	39.41	
445	53.33	
490	71.20	
542	96.36	
600	130.00	
660	173.03	
730	234.13	
807	316.31	
890	424.29	
982	569.93	



90990

PERFORMANCE CURVE



TYPE B
NON-OVERLOAD
WHEEL

F. 585

26

100 20.193 40.58 60.58 88.77 121.55 141.384 161.54 181.733 201.926

PERCENTAGE OF BRAKE HORSEPOWER

STATIC PRESSURE

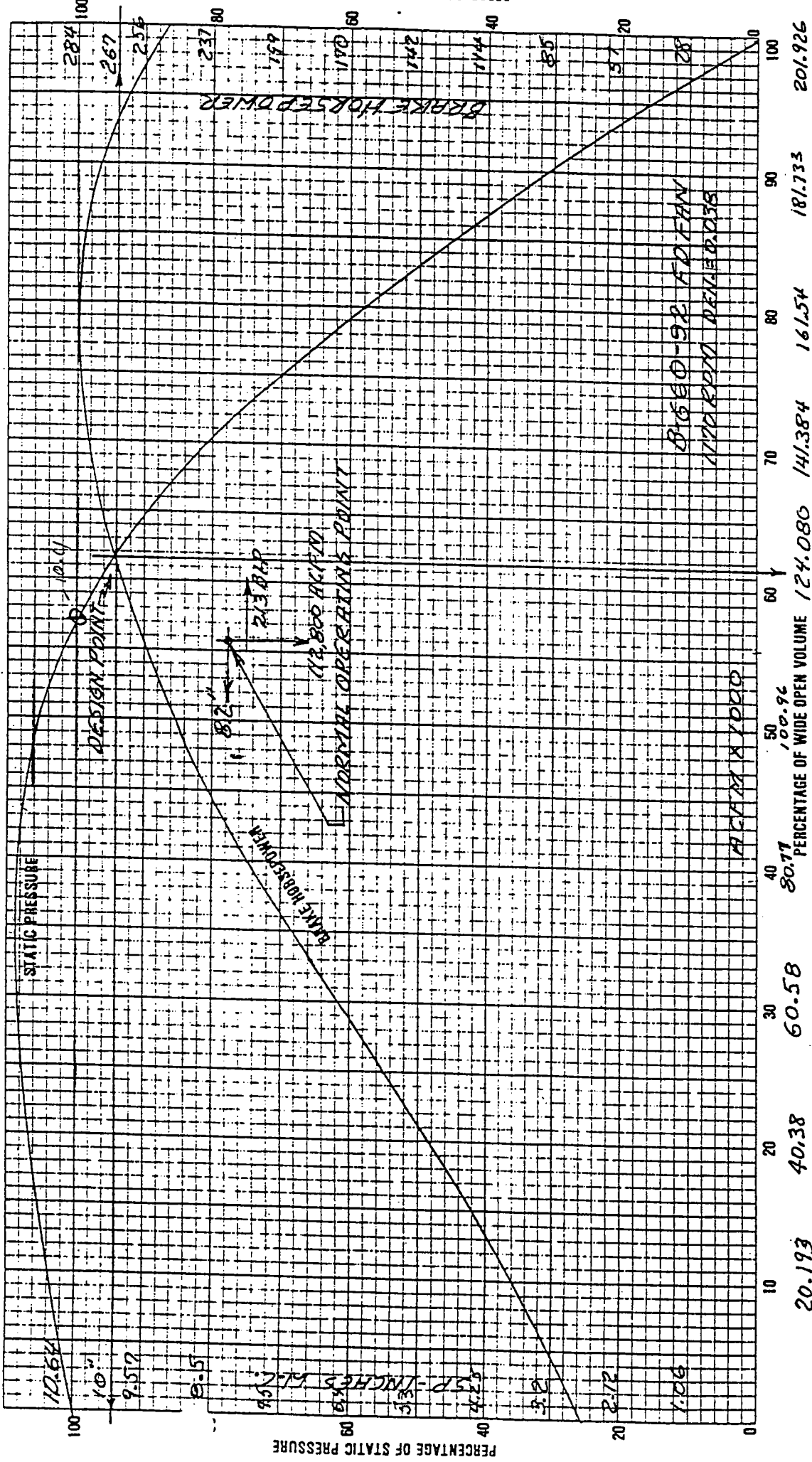
BRAKE HORSEPOWER

ACFM X 1000

124.080

54

B-660-92



PERFORMANCE CURVE

VOLUME FACTORS @ 100% RPM	SIZE FACTOR
182	3.54
200	4.70
222	6.72
245	8.54
270	11.43
300	15.68
330	20.87
365	29.50
402	39.71
445	53.33
490	71.20
542	96.36
600	130.00
660	173.03
730	234.73
807	316.51
890	424.29
982	569.93

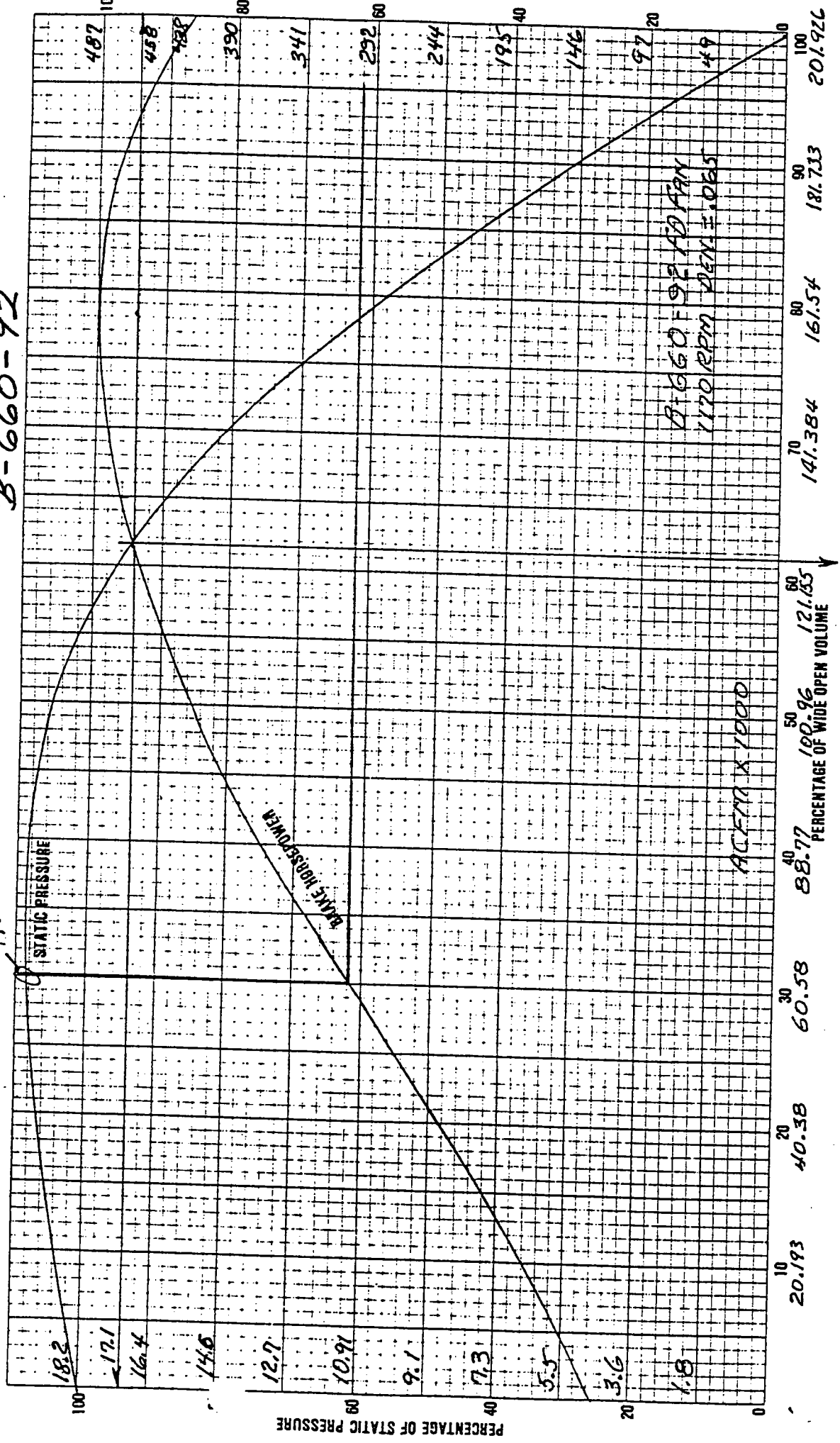
G.C. BROACH CO #90990-7



F 48°

B-660-92

19.0

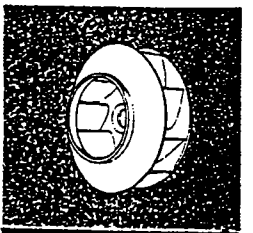


VOLUME FACTORS @ 100% X RPM

SIZE FACTOR

182	=	3.54
200	=	4.70
222	=	6.42
245	=	8.54
270	=	11.43
300	=	15.68
330	=	20.87
365	=	29.50
402	=	39.41
445	=	53.33
490	=	71.20
542	=	96.36
600	=	130.00
660	=	173.03
730	=	234.13
807	=	316.31
890	=	424.29
982	=	569.93

PERFORMANCE CURVE



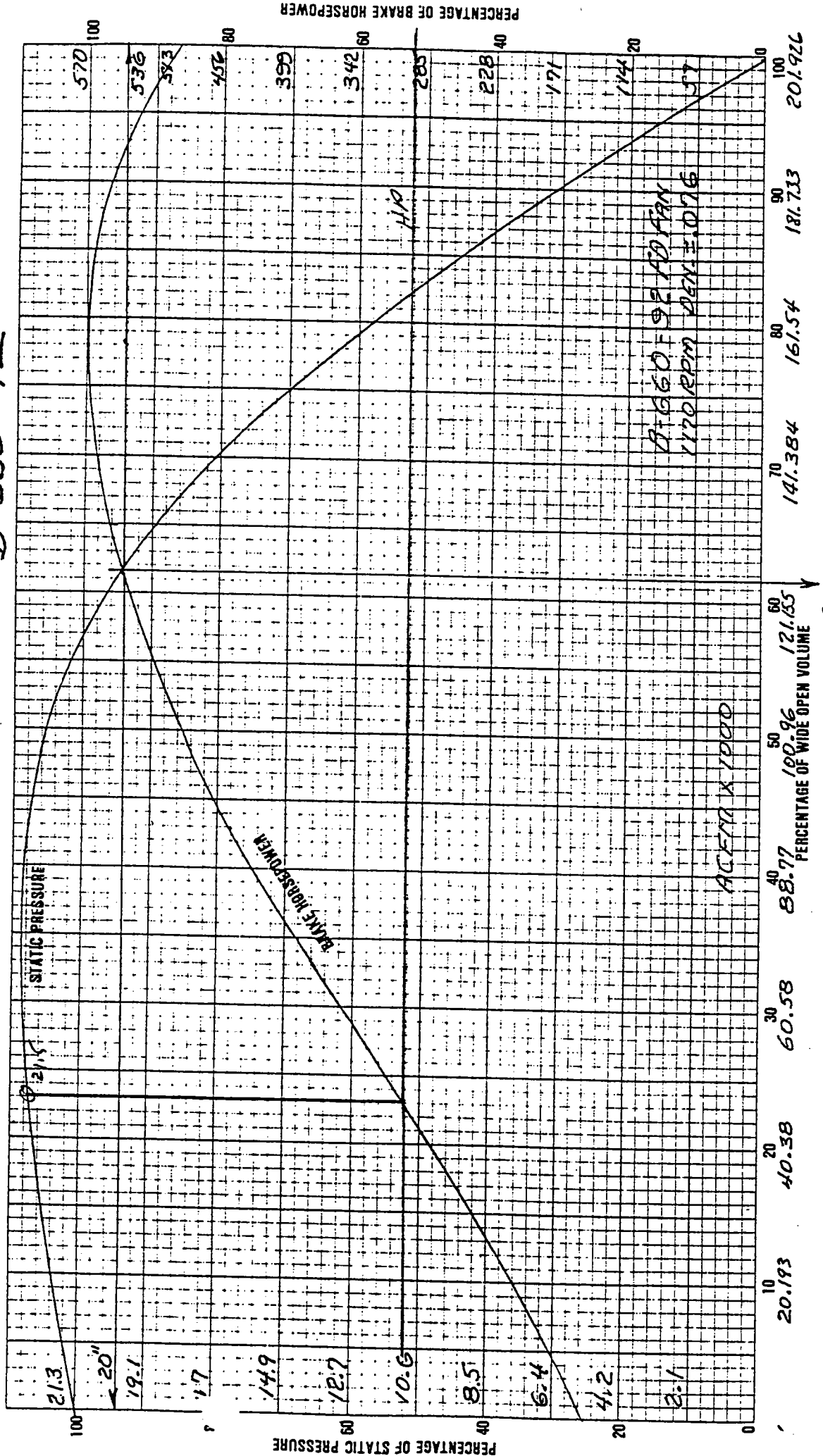
TYPE B
NON-OVERLOAD
WHEEL



90 990

97° F

B-660-92



VOLUME FACTORS @ 100% X RPM

SIZE FACTOR

182	=	3.54
200	=	4.70
222	=	6.42
245	=	8.54
270	=	11.43
300	=	15.68
330	=	20.87
365	=	29.50
402	=	39.41
445	=	53.33
490	=	71.20
542	=	96.36
600	=	130.00
660	=	173.03
730	=	234.13
807	=	316.31
890	=	424.29
982	=	569.93

TYPE B

NON-OVERLOAD WHEEL

PERFORMANCE CURVE

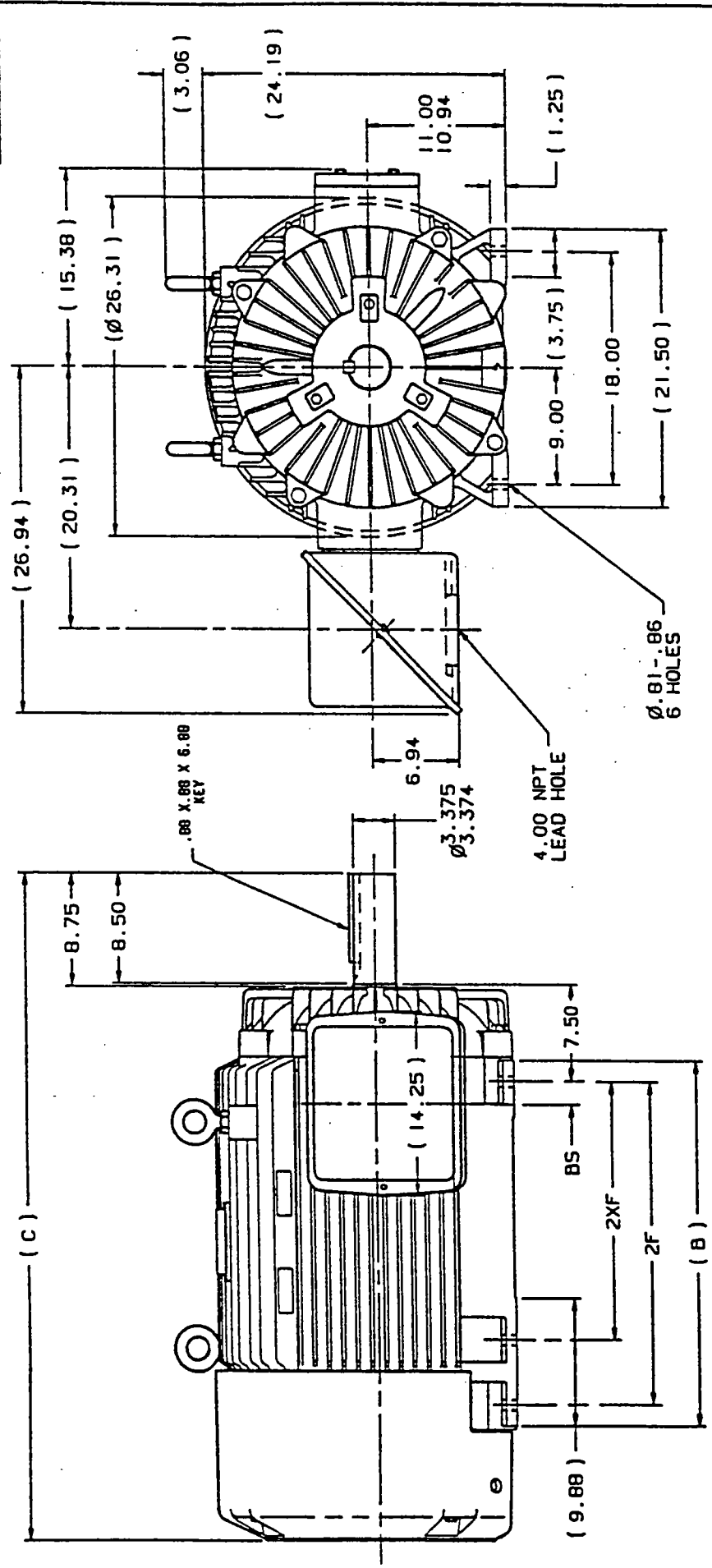


06609

F 10

B-660-92

D-55513737



NOTES:

1. C. BOX CAN BE ROTATED IN 90° STEPS.
2. NAMEPLATES TO BE READ FROM CONDUIT BOX SIDE OF MOTOR.

DASH	FRAME	B	C	2F	2XF	BS
2875	447T	28.25	51.69		20.00	1.78
2875	449T	28.25	51.69	25.00		1.78

<input checked="" type="checkbox"/> SPEC. DIMENSIONS UNLESS NOTED OTHERWISE UNLESS OTHERWISE SPECIFIED DIMENSIONS ARE IN INCHES UNLESS NOTED OTHERWISE	MATL SPEC FINISH	DRAWN TLD BY DATE 1-12-90
	NAME TLD	PROJECT NEW DRAWING - 3654695
447-449T FR. - STD.	DATE	NAME CHANG
CAD FILE NO D-55513737		

*** REQUESTOR: LOS.WA - DISTRIBUTOR MARKETING TERM=WCE4; 03/25/91, 03:37pm ***

*** SYSM OUTBASKET PRINT ***

MESSAGE ID: 222039 DATE: 03/25/91 TIME: 03:37pm PRIORITY: 000

SUBJECT: 300 HP CERTIFIED DATA

MARATHON ELECTRIC MANUFACTURING CORPORATION
100 EAST RANDOLPH STREET
WAUSAU WISCONSIN 54401

CERTIFIED DIMENSION DATA

FOR.: L&S ELECTRIC OUTLINE NO: B-SS513737-2875
5101 MESKER ROAD
SCHOFIELD, WIS 54476

ATTN: LAURIE NELSEN

CUSTOMER.....: INDUSTRIAL AIR PRODUCTS
CUSTOMER ORDER NO: 13137
M.E. ORDER NO.....: 3758950
MODEL NUMBER.....: 449TTFS6596AN
TYPE.....: TFS FRAME.....: 447/449T
HP/KW.....: 300 RPM.....: 1200
CYCLE.....: 60 PHASE.....: 3
VOLTAGE.....: 460 INSULATION: H
DUTY CYCLE.....: CONTINUOUS AMBIENT...: 40 DEGREES C
ENCLOSURE.....: XRI HIGH EFF BEARINGS...: BALL-BALL
OTHER INFORMATION: DIRECT COUPLED APPLICATION
ROTOR WK² = 182 LB FT²

CERTIFIED BY: JIM STROJNY

SIGNATURE...: *Jim Strojny*

DATE: 03/25/91

DATE: 03/25/91

"BUY MARATHON MOTORS"

B-660-92

*** REQUESTOR: LDS.WA - DISTRIBUTOR MARKETING TERM=WCE4; 03/25/91, 02:22pm ***

*** SYSM EFORM PRINT ***

MESSAGE ID: 222031 DATE: 03/25/91 TIME: 02:16pm PRIORITY: 000

SUBJECT: 300 HP PERF DATA

```

*****
| MARATHON ELECTRIC MFG CORPORATION, 100 EAST RANDOLPH ST. WAUSAU, WISC
| ENGINEERING PERFORMANCE DATA
| *****
| CLIENT.....: L&S ELECTRIC FOR WILL JONES & ASSOCIATES
| PROJECT.....: INDUSTRIAL AIR PRODUCTS JOB
| QUANTITY.....: 4
| *****
| ENCLOSURE.....: XRI ULTRA HIGH EFFICIENCY SEVERE DUTY TEFC
| HORSEPOWER.....: 300
| VOLTS.....: 460 /
| PHASE.....: 3
| HERTZ.....: 60
| FRAME.....: 447/449T
| SYNCHRONOUS RPM.....: 1200
| FULL LOAD RPM.....: 1188
| EFFICIENCY
|   FULL LOAD.....: 95.4
|   3/4 LOAD.....: 95.6
|   1/2 LOAD.....: 94.8
| POWER FACTOR
|   FULL LOAD.....: 76.0
|   3/4 LOAD.....: 72.0
|   1/2 LOAD.....: 62.0
| FULL LOAD AMPS.....: 384
| LOCKED ROTOR AMPS....: 2131
| LOCKED ROTOR TORQUE..: 152 PERCENT
| BREAKDOWN TORQUE....: 234 PERCENT
| INSULATION.....: H
| SERVICE FACTOR.....: 1.15
| AMBIENT TEMP.....: 40 DEGREE C CONTINUOUS
| LOCKED ROTOR CODE....: KVA CODE G
| MISC.....: WINDING HT44965-2
|
|
|
| *****
| "FAX 715-675-9413" "BUY MARATHON ELECTRIC MOTORS"
| *****

```

FPBC 71459200,4,A,2

PF5-CLEAR SCREEN

WAUSAU MOTOR-FRONT PAGE BILL OF MATERIAL 03/25/91 PAGE 1 CHR502A

MODEL 7145920-0 DESC 449TTFS6596AN

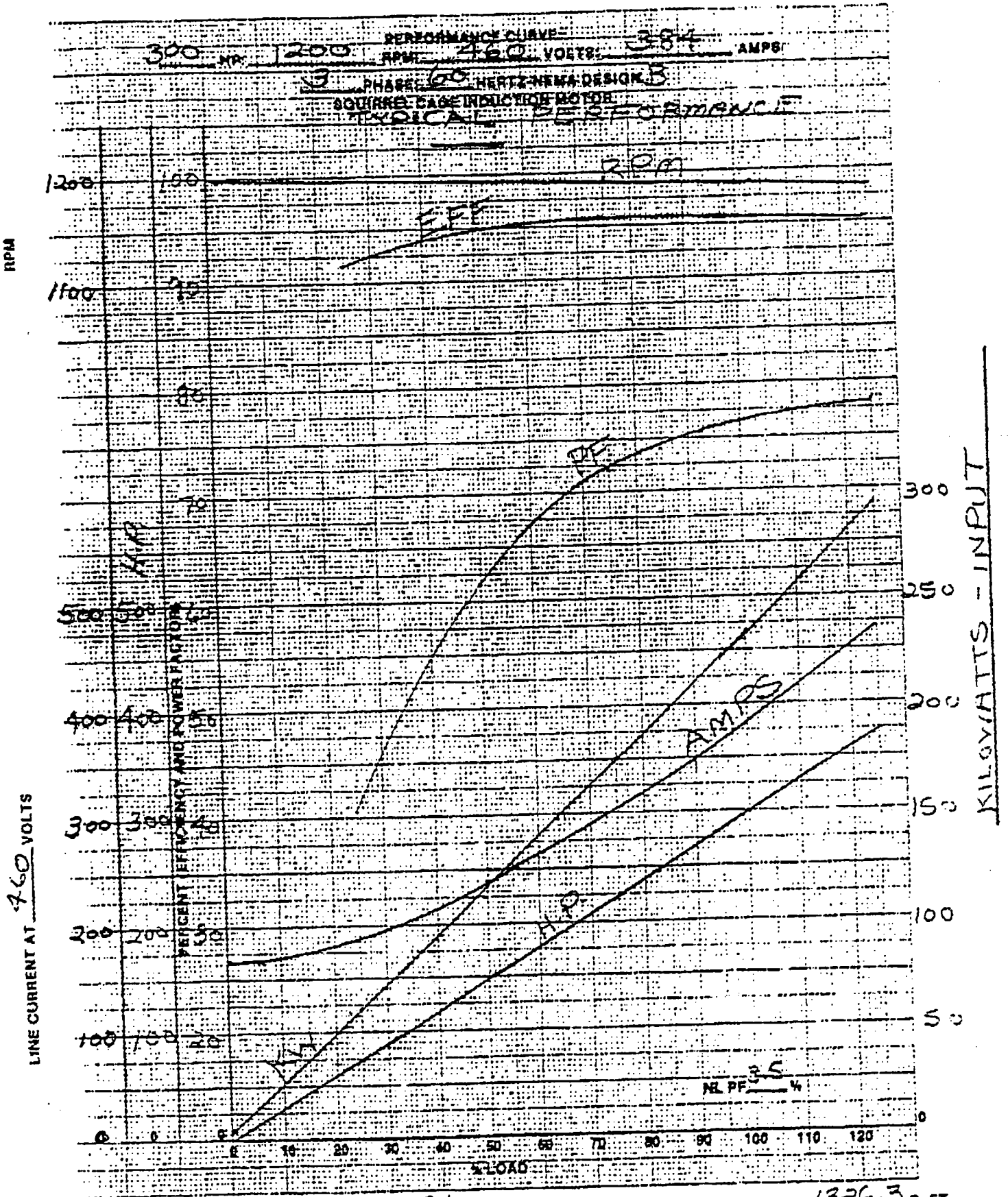
APPR TAG A AUTH/APPR

FRAME-MTG	FR- 74 449T	ENCLOSURE	EN- 19 TEFC
HORSEPOWER	HP- 71 300	VOLTAGE	VO- 35 460
FRAME-LAM	FL- 36 440 20.3	MOUNTING	MT- 41 STD RIGD/FT/RIGID BASE
FRAME-MATL	FM- 21 CI=CAST IRON S	ELECT TYPE	ET- 37 3 PH SQ CAGE IND RUN
BEAR TYPE	BR- 11 BALL	SHAFT TYPE	ST- 19 NEMA-STD-LONG OR FRACT
INSUL CLS	IN- 19 CLASS H	SHAFT DESC	3.38 X 8.50 IN. SEK
ROTATION	RO- 17 REVERSIBLE	ELEC PERF	EP- 13 DESIGN 8
SHAFT MATL	SM- 11 STANDARD STEEL	THERM PROT	TP- 29 NONE/CON NOT APPR
POLES	PO- 15 6	DUTY/AMB	DA- 01 CONT. 40 C AMB
FREQUENCY	HZ- 13 60 HZ	STACK LENGTH	22.50
KVA CODE	LR- 07 G 5.60 - 6.30	PRODUCT CODE	- - - -
RPM	1188	LEADS DESC	12-8 IN. LEADS AT A
PHASE	3	OUTLINE	B-SS513737-2875
TYPE	TFS	WINDING	H-T44965-2
SHFT E/BRG	319	CONN DIAG	A-EE73008H
OPP E/BRG	319	FL EFF 95.4	FL PF 76.0 MAX KVAR 121.0
NAMPL FRAME	447/449T	CORR AMPS	309
NAMEPLT HP	300	SECOND VOLTS	
AMPS	384	LAYOUT	D-FC440-20.38
SECOND AMP		SVC FACT AMP	
SVC FACT	1.0	START AMPS	



HI EFF

B-660-92



FRAME 449T

BDT 3106.8 LB. FT. 234 %

LRT 2021.3 LB. FT. 152 %

PU 1875 LB. FT. 141 %

* LRA 2131 AMPS @ 460 VOLTS

100% - 1326.3 LB. FT.

CURVE NO. H-T44965-2

M.H.T 11-14-90

MARATHON ELECTRIC MANUFACTURING CORPORATION

WAUSAU, WISCONSIN

B-660-92



FRAME 447/449T

FORM 889-R1

CURVE NO. H-T4496S-2

DATE 1-28-91

Marathon Electric

RESERVED RIGHTS IN THIS DOCUMENT WILL BE THE PROPERTY OF MARATHON ELECTRIC CORPORATION